



UNIVERSITY OF CAMBRIDGE INTERNATIONAL EXAMINATIONS  
International General Certificate of Secondary Education

CANDIDATE  
NAME

CENTRE  
NUMBER

--	--	--	--	--	--

CANDIDATE  
NUMBER

--	--	--	--	--



**ENVIRONMENTAL MANAGEMENT**

**0680/12**

Paper 1

**May/June 2013**

**1 hour 30 minutes**

Candidates answer on the Question Paper.

Additional Materials: Ruler

**READ THESE INSTRUCTIONS FIRST**

Write your Centre number, candidate number and name on all the work you hand in.  
Write in dark blue or black pen.  
You may use a soft pencil for any diagrams, graphs or rough working.  
Do not use staples, paper clips, highlighters, glue or correction fluid.  
DO **NOT** WRITE IN ANY BARCODES.

Electronic calculators may be used.

Answer **all** questions.

At the end of the examination, fasten all your work securely together.  
The number of marks is given in brackets [ ] at the end of each question or part question.

For Examiner's Use	
1	
2	
3	
4	
5	
6	
<b>Total</b>	

This document consists of **16** printed pages.



Answer **all** the questions.

For  
Examiner's  
Use

- 1 (a) Insolation is a measure of the solar radiation reaching a given surface area of the Earth in a given time.

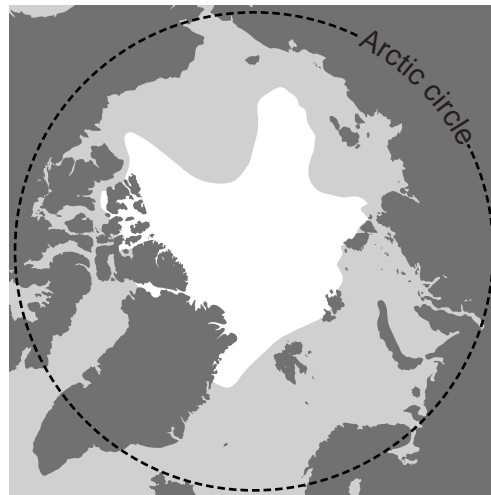
Explain why insolation is greatest at the equator and least at the poles.

.....  
.....  
.....  
.....[3]

- (b) (i) The maps show the permanent polar ice as it was in 1980 and 2010.



1980



2010

**Key**

- ice
- sea
- land

Describe the changes over the 30 years.

.....  
.....  
.....  
.....[2]

(ii) Many people believe that global warming is the cause of these changes.

Explain this view from your knowledge of the greenhouse effect.

For  
Examiner's  
Use

.....  
.....  
.....  
.....  
.....  
.....  
..... [3]

(iii) What measures could governments take to prevent further change in the extent of polar ice?

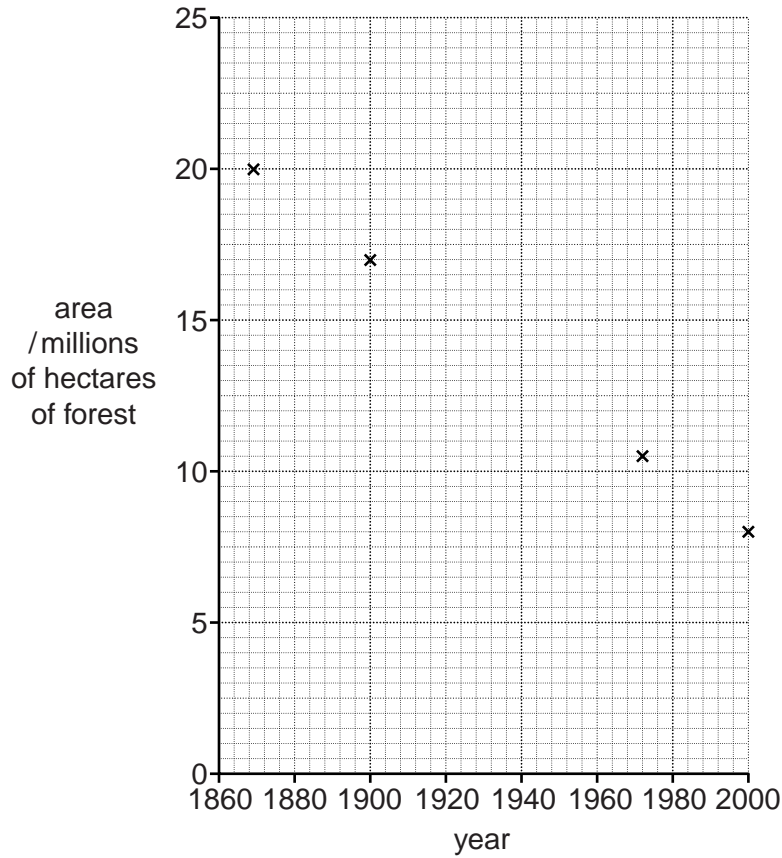
.....  
.....  
.....  
..... [2]

[Total: 10]



- (ii) Complete the graph below using the data in the table and draw in a line to show the trend.

For  
Examiner's  
Use



[2]

- (iii) Describe the trend of the graph that you have completed.

.....  
 .....  
 ..... [1]

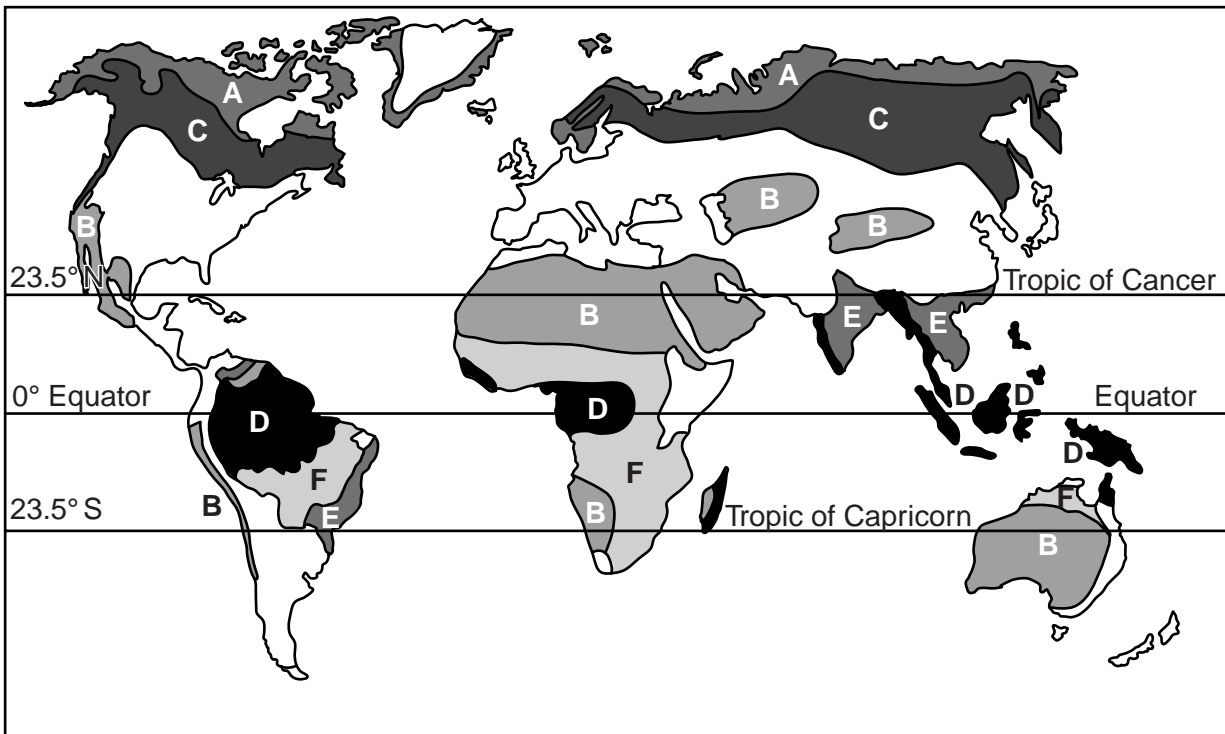
- (iv) A government minister in a conservation speech emphasised the importance of conserving forests to sustain the tourism industry in his country.

Explain what he meant. In your answer refer to ecotourism.

.....  
 .....  
 .....  
 .....  
 ..... [2]

[Total: 10]

3 (a) The map shows six biomes, marked A to F.



(i) Three of the biomes are forests.

Which letters on the map show taiga, tropical rainforest and monsoon forest?

taiga .....

tropical rainforest .....

monsoon forest ..... [2]

(ii) Choose **two** of the forest biomes and describe the main differences between the trees in these biomes.

.....  
 .....  
 .....  
 ..... [2]

**(b)** The 2011 World Environment Day had as its theme, 'Forests: Nature at Your Service'. The theme was chosen to highlight the environmental, economic and social importance of the world's forests as they are affected by deforestation.

**(i)** What did the organisers mean by 'the environmental importance of the world's forests'?

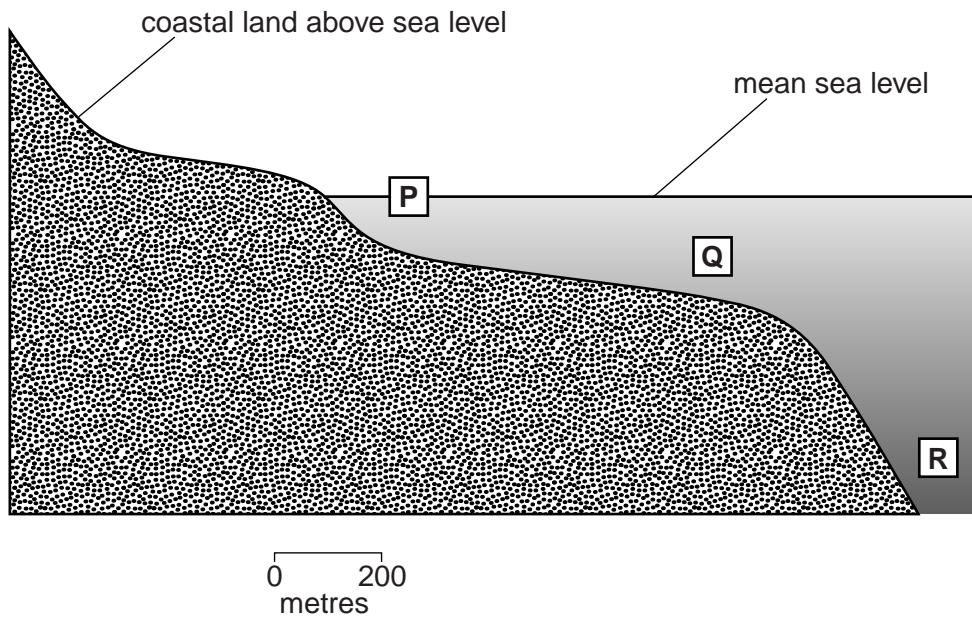
.....  
.....  
.....  
.....  
.....  
..... [3]

**(ii)** How can the problem of deforestation be reduced?

.....  
.....  
.....  
.....  
.....  
..... [3]

[Total: 10]

4 (a) The diagram shows a section through the coastal zone and ocean.



(i) Which part of the sea, **P**, **Q** or **R**, is the most productive for:

fish and other food .....

oil .....

tourism. ....

[2]

(ii) Choose **one** of the above and explain how you arrived at your answer.

choice .....

.....

.....

.....

.....

.....

..... [2]



(b) Overfishing is a serious problem in many of the world's oceans.

For  
Examiner's  
Use

(i) State and explain **two** causes of overfishing.

.....  
.....  
.....  
.....  
.....  
.....  
.....  
.....  
.....  
..... [4]

(ii) Why is the problem of overfishing difficult to reduce?

.....  
.....  
.....  
.....  
..... [2]

[Total: 10]

5 (a) In China, surface water quality has been classified on a five point scale.

- G – Excellent
- H – Good
- J – Satisfactory
- K – Poor
- L – Very Poor

In 2011 a report stated that surface water quality in China varied as follows:

- 60% of rivers were grade J or better
- 23.6% of rivers were graded K or L
- 16.4% were too poor to be graded

(i) What percentage of rivers was less than satisfactory?

Space for working.

.....[1]

26 lakes or reservoirs were also surveyed. Eutrophication was found to affect 42.3% of these lakes and reservoirs.

(ii) Explain what is meant by *eutrophication*.

.....

.....

.....

.....

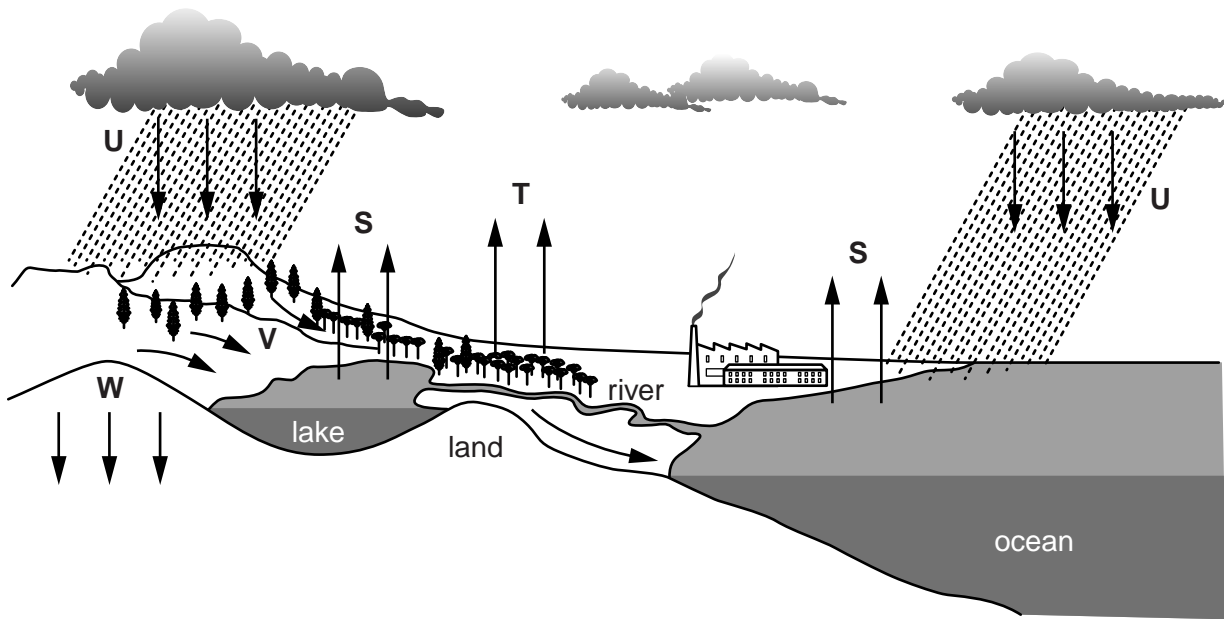
.....

.....

.....[3]

(b) Humans also affect processes within the water cycle.

For  
Examiner's  
Use



(i) Which letters show run-off and infiltration?

run-off .....

infiltration .....

[1]

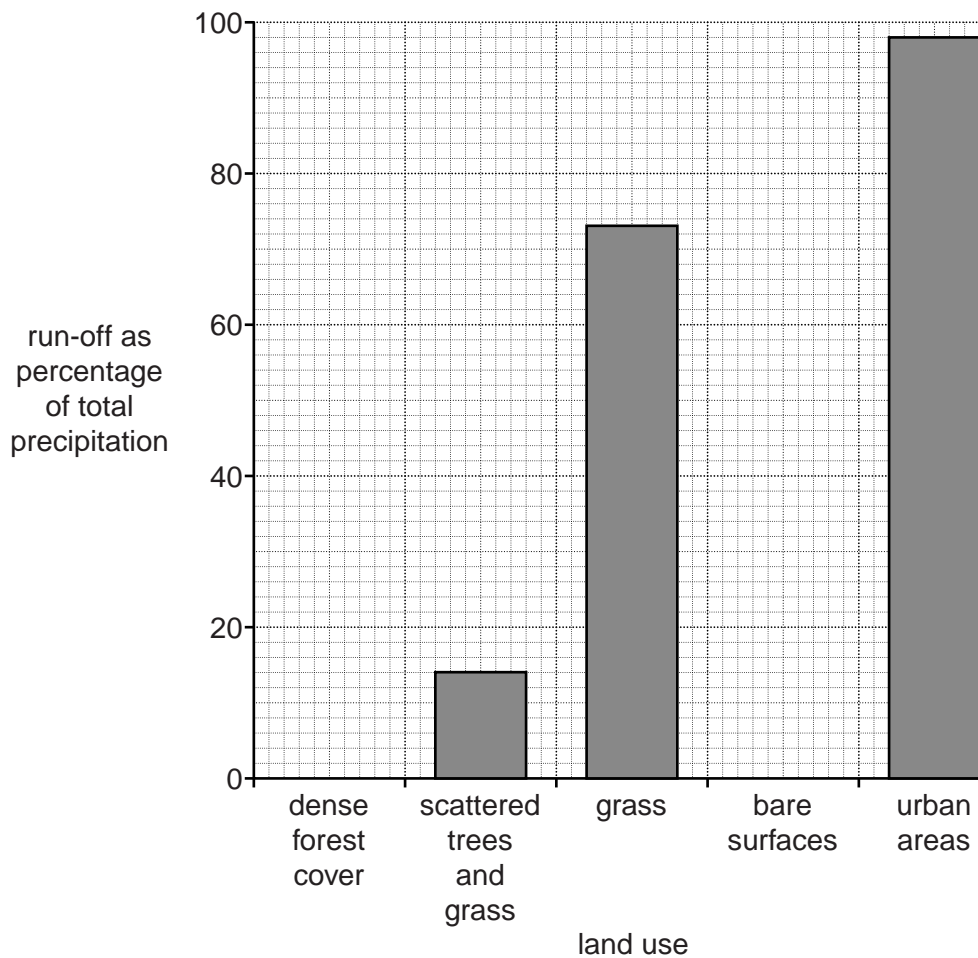
(ii) On the diagram above mark with a letter X a place where interception occurs.

[1]

- (iii) The table below shows the run-off as a percentage of the total precipitation for surfaces with different land use.

For  
Examiner's  
Use

land use	run-off as percentage of total precipitation
dense forest cover	2
scattered trees and grass	14
grass	73
bare surfaces	85
urban areas	98



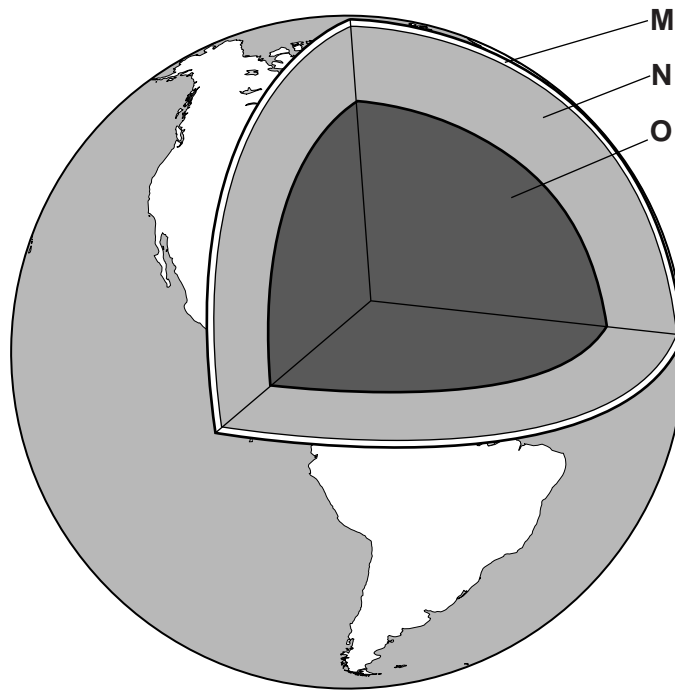
Use the table to complete the bar chart.

Your answer should give a complete bar chart.

[1]



6 (a) The diagram shows a section through the Earth.



(i) Name layers **N** and **O**.

**N** .....

**O** .....

[2]

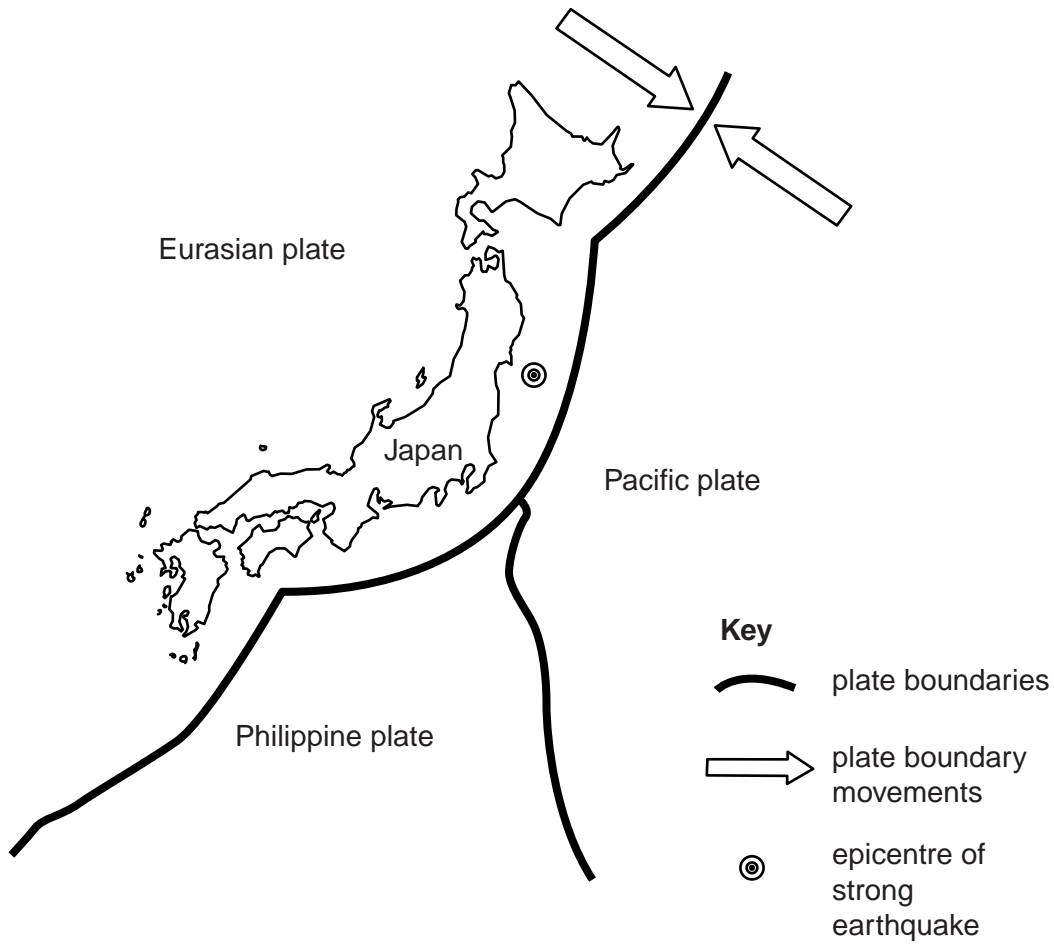
(ii) Complete the sentence below.

Layer **M** is called the ..... This layer is broken into large pieces, called ..... plates, that move around.

[2]

(b) In 2011 a strong earthquake occurred off the coast of Japan. The map shows its location.

For  
Examiner's  
Use



(i) Explain why a strong earthquake occurred at this location.

.....

.....

.....

.....

.....

..... [3]

